

# West Wiltshire Society of Model Engineers Newsletter

Issue No.26 August/September 2022



## Calendar

### August

6<sup>th</sup> – Saturday Steam Up. 10am-4pm.

13<sup>th</sup> – Seend Fete.

20<sup>th</sup> – Saturday Steam Up. 10am-4pm.

### September

3<sup>rd</sup> – Saturday Steam Up. 10am-4pm.

17<sup>th</sup> – Saturday Steam Up. 10am-4pm.

### October

1<sup>st</sup> – Saturday Steam Up. 10am-4pm.

15<sup>th</sup> – Saturday Steam Up. 10am-4pm.





# News

## Seend Fete

The club will be offering rides on the portable track at Seend fete on Saturday 13th August. The trailer will be picked up from the club at 8:30 and setting up will commence at 9:00 on Seend Lye field (in the centre of the village off the A361). The fete runs from 1:00 pm until 5:00 pm.



If you can help with any of the following it would help the club:

- Bringing and/or running a loco.
- Setting up.
- Loco driving.
- Guard.
- Collecting money for rides.
- Clearing away at the end of the show.

Please reply to Colin Wade at:  
[secretary@wwsme.org.uk](mailto:secretary@wwsme.org.uk)

## Rail Mania Podcast

Club member Jonathan Guilbert has recently been featured in a podcast:

<https://www.youtube.com/watch?v=ysuxBFtIILY>

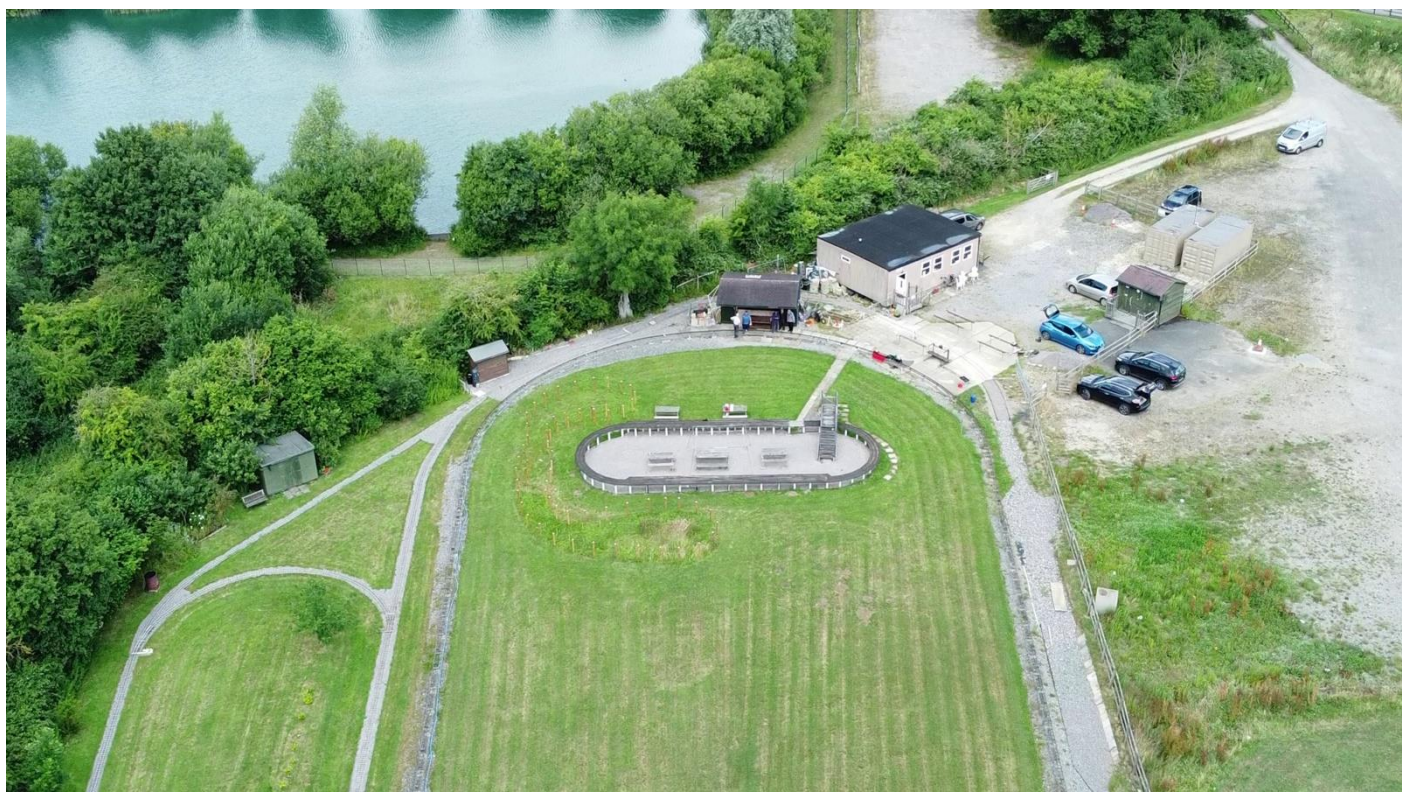
Jon has had a lifelong interest in steam locomotives large and small and has a YouTube channel showing his own original films some of which feature our WWSME club track.

<https://www.youtube.com/c/GandyDancerProductions>



## Aerial Picture of WWSME Club Site

Club member Pete Devrell has taken some aerial pictures of the club site one of which is shown below. What a great shot!





# Do You Recognise This Driver?

Club member Jim Phelps happily saved this newspaper cutting over 60 years ago and thought members of our club would like to see it.

The driver is 16 year old Jim when he was a member of the Trowbridge and District Society of Model Engineers.

Some of you may recognise a few of the people standing behind Jim. Back right is George Huntley and next to him is Bob Savory. The lady forth from the right is Mrs Savory (Bob's wife).

The picture was taken in June 1961 at Oldfield Park Junior School in Westbury and Jim is giving rides to the children driving Bob's 3½" LBSC Juliet engine.

This picture has several interesting connections to the WWSME and shows the very early beginnings of what went on to be the fantastic club we have today.

Bob Savory founded the WWSME in 1965 and Oldfield Park Junior School is very near to Queens Road in Westbury which was the first site of the permanent 3½" and 5" elevated track built after raising funds taking the portable track to events such as this. The Queens Road track closed in 2007 and was moved to our present site and re-opened on 6<sup>th</sup> June 2009.

Jim still rarely misses a 'Saturday Steam Up' at the WWSME track though these days instead of a 'borrowed' 3½" Juliet he is progressing well building a 5" Britannia.

This is another picture of Jim driving Bob Savory's Juliet in 1961 in Bob's back yard with passengers Ronald and David Huntley.



WILTSHIRE NEWS, FRIDAY, JUNE 23, 1961

17



**TSHORN** (left), presenting a bouquet to Mrs. N. F. West Ashton, who opened the Westbury Diamond Jubilee Committee Fete, at Oldfield Park Junior School. West in the picture is Mr. Williams (chairman) and Mr. E. (secretary). **RIGHT:** Popular feature at the fete was this engine, which gave rides to children.