



West Wiltshire Society of Model Engineers Newsletter

Issue No.25 June/July 2022



Calendar

June

- 3rd – Bradford on Avon Jubilee Fun Day.
- 4th – Saturday Steam Up. 10am-4pm.
- 4th – Hilperton Village Fete.
- 11th – Boiler Testing Day. 10am-4pm.
- 18th – Saturday Steam Up. 10am-4pm.

July

- 2nd – Saturday Steam Up. 10am-4pm.
- 16th – Saturday Steam Up. 10am-4pm.

August

- 6th – Saturday Steam Up. 10am-4pm.
- 20th – Saturday Steam Up. 10am-4pm.



News

Club Loco Build

Polly Molly-Ann

By Pete Brougham



The Polly Project has just two more kits 11 & 12 to go and is really taking shape now.



The cladding is now attached and the boiler fitted into the frames.



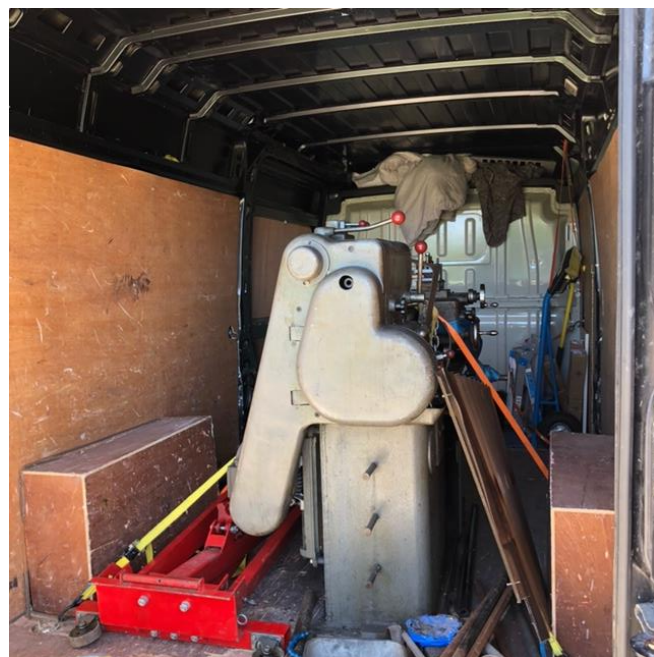
'New' Harrison Lathe

By Pete Brougham

We have a new to us, Harrison lathe donated to us. The Myford has gone into storage.



The extended foundation where once the Myford stood.



The Harrison on the van ready to unload.



The Harrison unloaded and in place only about 12 cwt. Not very heavy!

Boiler Testing Day

Saturday 11th June

There will be a boiler testing day on Saturday 11th June at the club.

This is your chance to get your locos steaming for the summer!

To make sure the boiler testing day runs as smoothly as possible please make sure you follow the guidelines below:

- Testing to commence at 10am and FINISH at 4 pm.
- The engine must be in a presentable condition. The smokebox and firebox must be cleaned out, clear of ash etc.
- There must be a red line on the pressure gauge, indicating the boiler maximum working pressure. The red line must be on the gauge face and not on the glass or bezel.
- Any steel boiler requiring a hydraulic test, the cladding has to be removed every seven years, to allow inspection of the boiler surface. If this seven years has expired, then please remove the cladding beforehand and the boiler must be empty of water.
- If the boiler requires a hydraulic test, please bring along any special blanking plugs that are specific to your boiler and

ensure a ¼" BSF female thread is provided for the club hydraulic test apparatus to attach to your boiler.

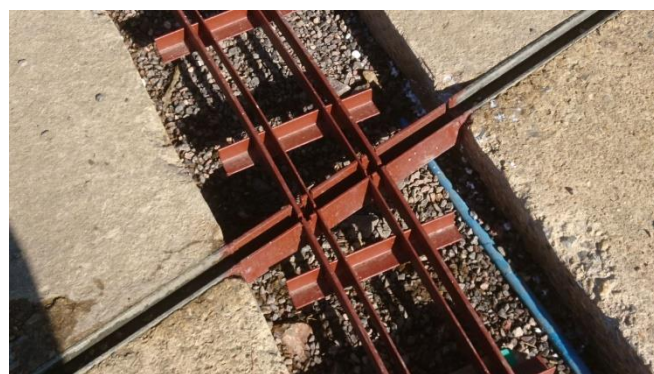
- We do reserve the right to decline to test a boiler which doesn't comply with the above.

5" Ground Level Track

On Saturday 9th April Terry organised a team of volunteers to lay the concrete where the 5" ground travel track passes through the steaming bays.



The traverser has to cross the new track and the welded steel track panel to achieve this is shown below shortly before being burried in concrete.



16mm Track

The 16mm outdoor track is making good progress. The posts to support the track bed have begun to be driven into the ground and trimmed to the correct level. There are about 45 remaining posts and we are planning a working party soon where we need some energetic volunteers please.



The 5" ground level track is now very much part of the steaming bay area and should give us many years of service thanks to the members who gave their time and hard work to make this happen.



The track bed is now nearing completion and filled with ballast connecting the passing loop to the steaming bays.

